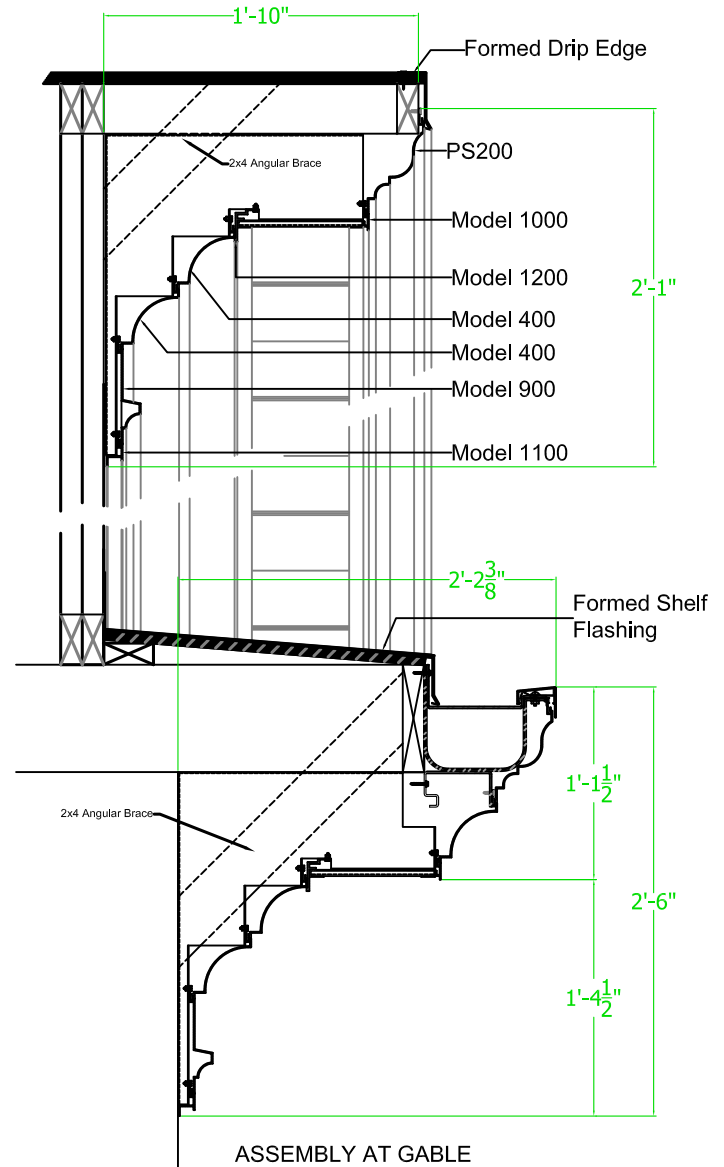
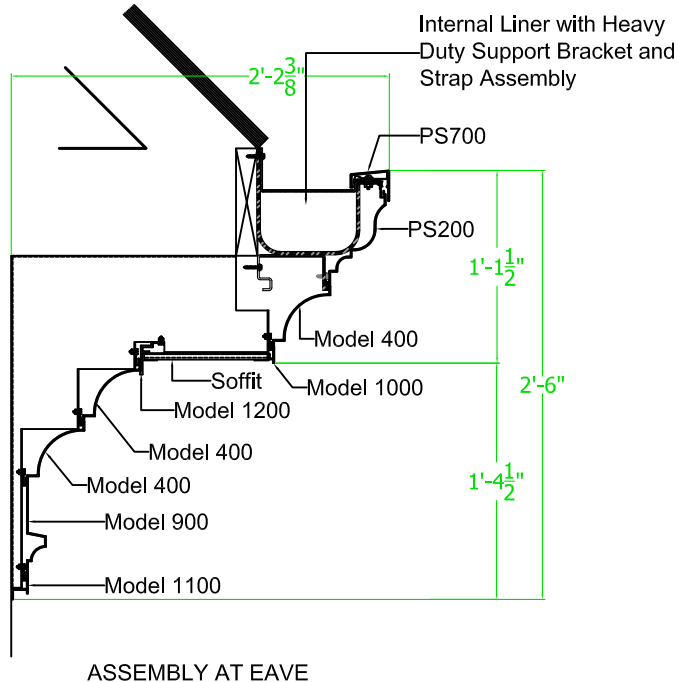




**SUBMITTAL / DATA SHEET**

**Designer Series Extruded Cornice System**  
**Cornice Design 6EX**



**Designer Series Extruded Cornice System:** These commercial extruded cornice systems are based on our pre-designed formed cornice designs but with extruded profiles. Cornice trims, including radius sculptured shapes, extensions, friezes, and sills, are 0.085" - 6063-T5 extruded aluminum and are supplied in 10' lengths. Joints receive concealed extruded aluminum splices or formed where needed. If required, mounting gussets are furnished at 24" - 30" centers. Gussets replace conventional framing methods and are designed to allow the cornice to freely expand and contract. Cornice profiles are fastened to the gusset system with stainless steel, type 304, #10-24 x 0.75" machine screws with nylon core hex lock nuts. VHB assist / isolator tape is to be installed at fastening locations to separate the dissimilar metals.

Customer:

Project:

Address:

Location:

Phone / Fax:

Architect: