

SUBMITTAL / DATA SHEET

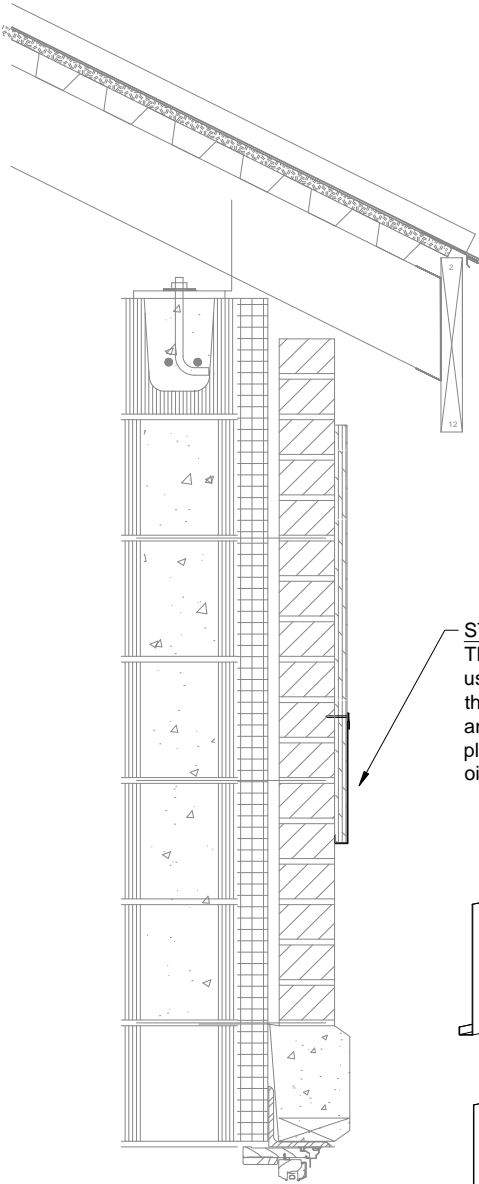
Perimeter
Systems

Innovative Aluminum Architecture

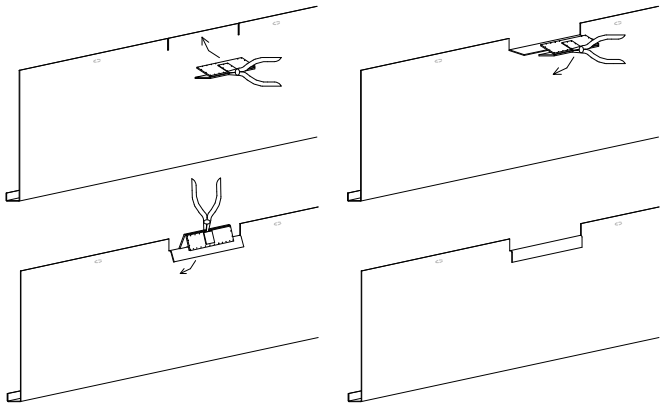
A division of



8370 East Hwy 78
Villa Rica, GA 30180
800-334-9823 770-942-1207 Fax 942-4173



STEP 1 - INSTALL D
This piece has to be "lanced" before installation. You must use tongs to fold down the top of piece between the slots that has no holes, then put this snug against the plywood and use #10x1" stainless screws to fasten this piece to the plywood. Do not overdrive the screws as this will cause oil canning.



SUBMITTAL / DATA SHEET

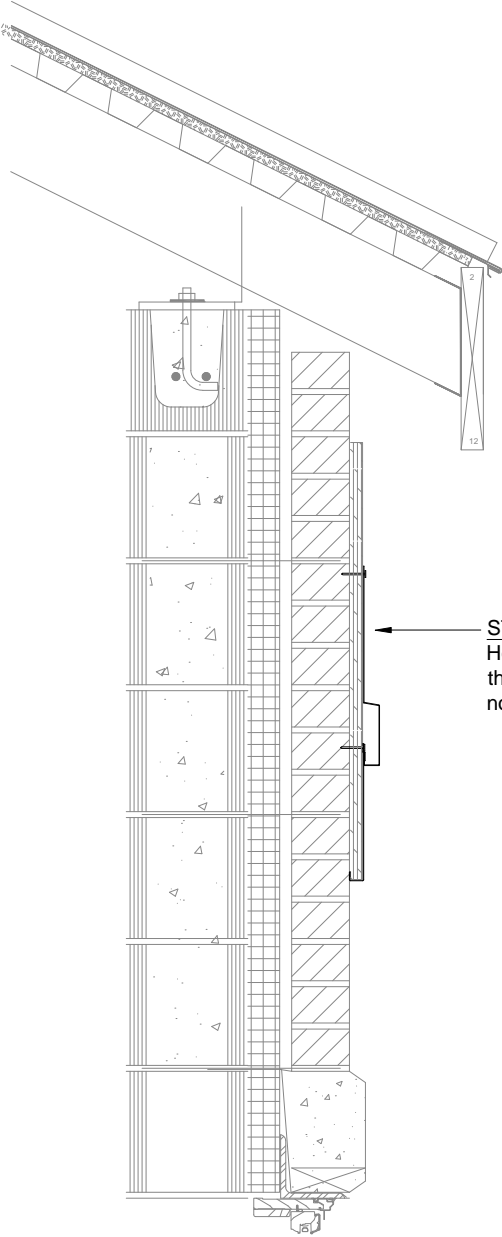
Perimeter
Systems

Innovative Aluminum Architecture

A division of



8370 East Hwy 78
Villa Rica, GA 30180
800-334-9823 770-942-1207 Fax 942-4173



STEP 2 - INSTALL C
Hook this into the lower piece, pull it tight and fasten this to the plywood with #10x1" stainless screws. Do not overdrive screws as this will cause oil canning.

SUBMITTAL / DATA SHEET

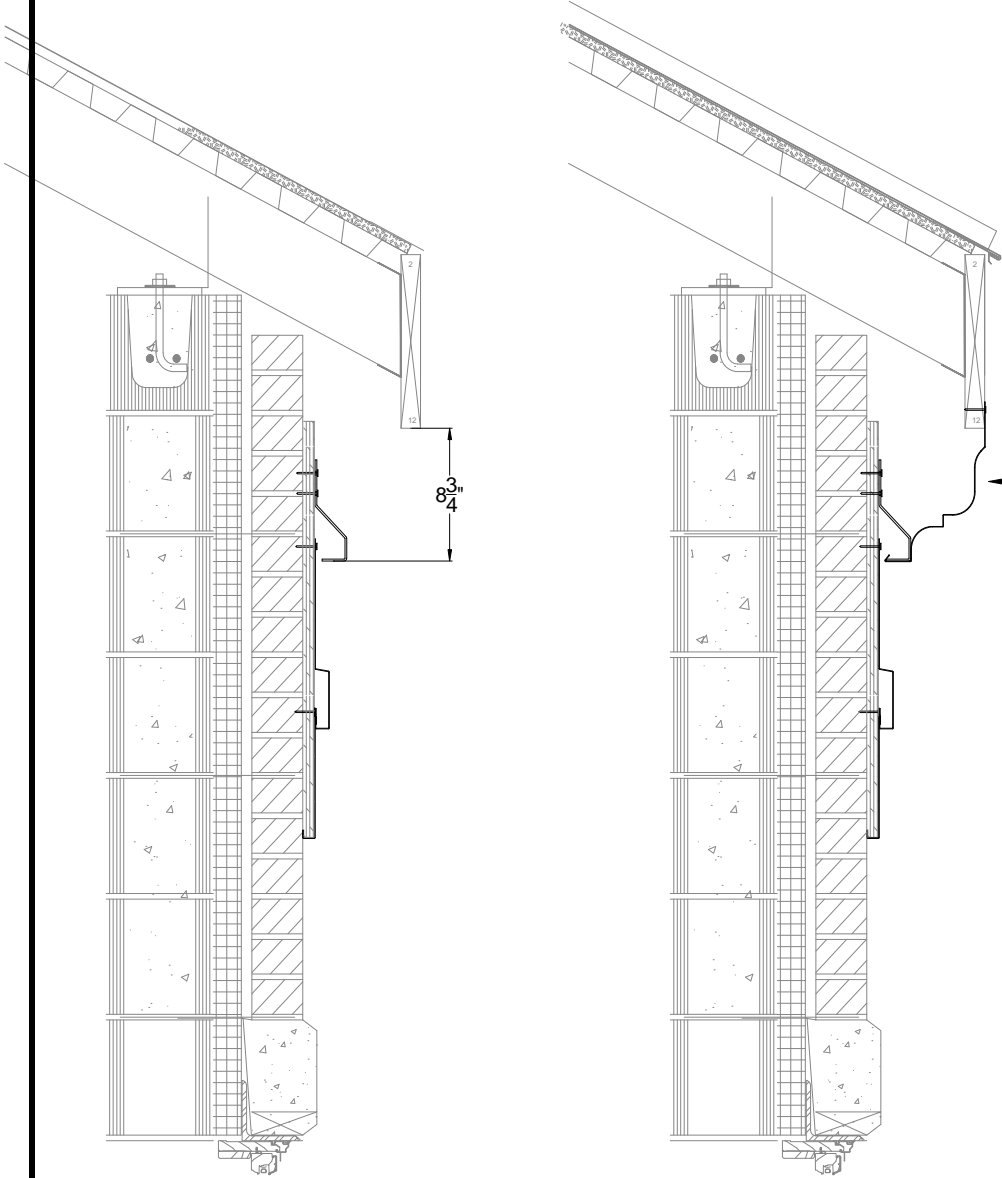
Perimeter
Systems

Innovative Aluminum Architecture

A division of

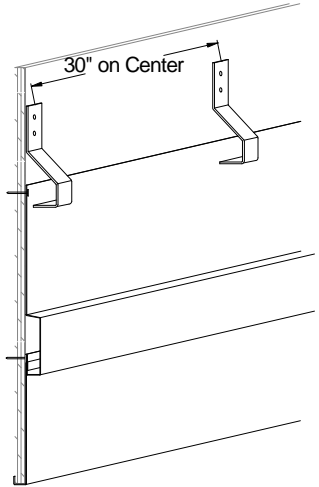


8370 East Hwy 78
Villa Rica, GA 30180
800-334-9823 770-942-1207 Fax 942-4173



STEP 3 - INSTALL BRACKET AND B

Fasten mounting bracket to plywood with 2 - #10x1 1/2" stainless screws, then put the roman moulding around the bottom of the bracket and fasten the top in place to 2x with #10x1" stainless screws.



SUBMITTAL / DATA SHEET

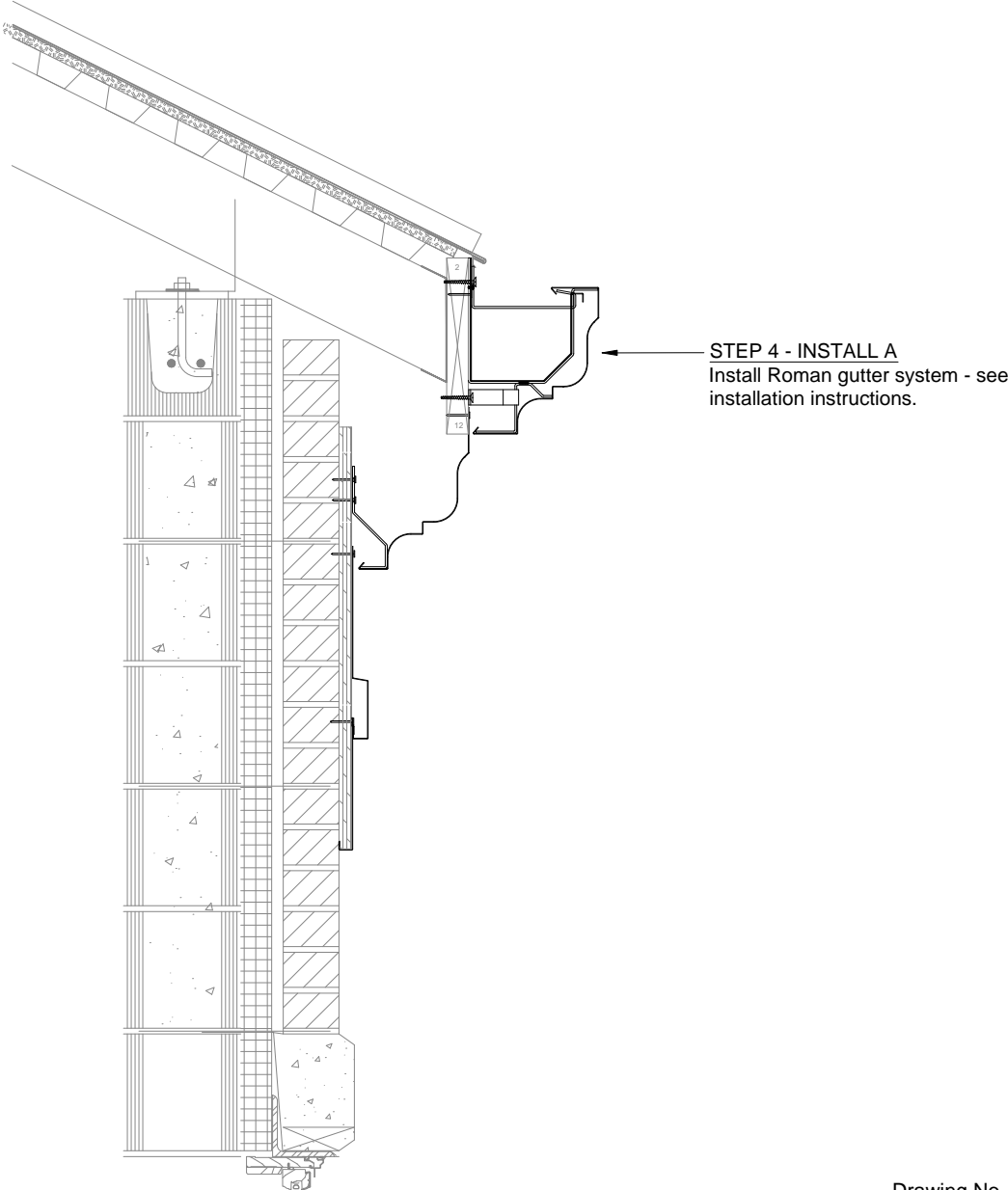
Perimeter
Systems

Innovative Aluminum Architecture

A division of



8370 East Hwy 78
Villa Rica, GA 30180
800-334-9823 770-942-1207 Fax 942-4173



Drawing No. 33d